



## Changing the Program Setups

The *Setups* screen for *eye tools* can be reached from the *Main Menu*. These values can be used to alter the default starting values and the operation of some of the *eye tools* calculators.

 **EXAMPLE:** An optometrist may prefer a higher or lower criteria for the definition of *clinically significant aniseikonia*.

 **WARNING:** Do not make changes to the setup values unless you are confident about the changes.

- ◆ **Defaults:** To return the *setups* to the system default values for a specific calculator, click on the selected *Defaults* button on the *setups* screen.
- ◆ **Restore All Defaults:** To return the *setups* to the system default values for all calculators, click on the *Restore All Defaults* button on the *setups* screen.

Document: 00121 Last edited: 24/5/05

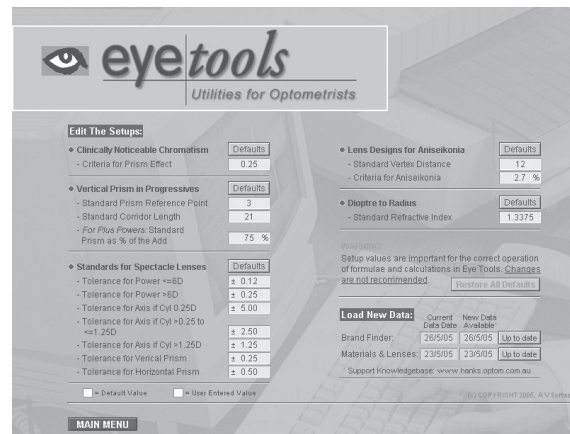


Figure: The Setups screen - any non default values are highlighted in yellow.