


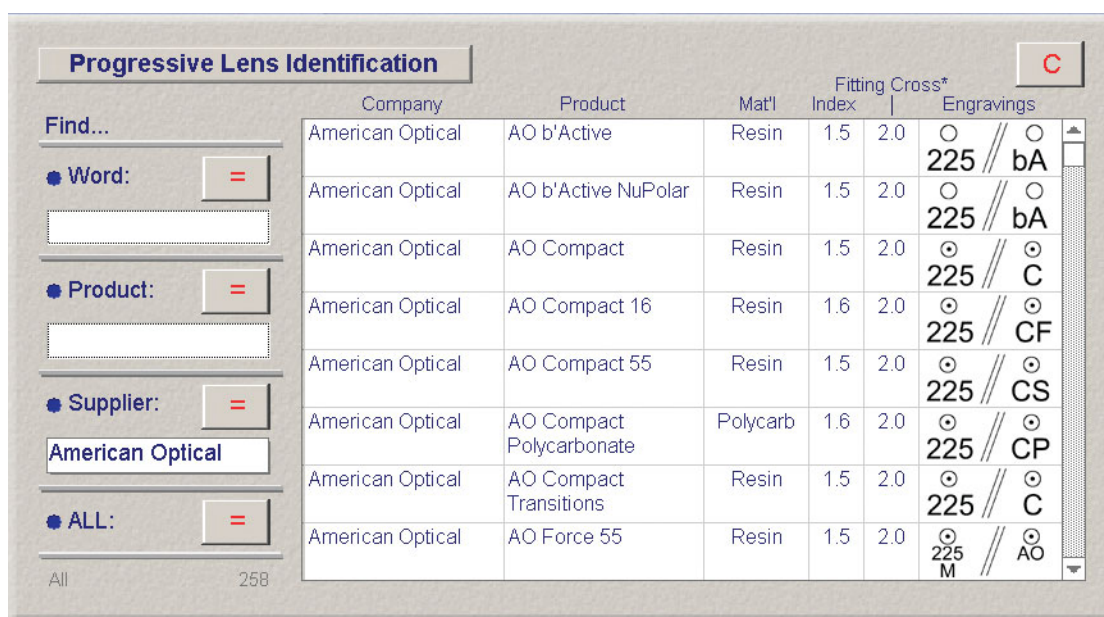
Progressive Lens Identification

Document: 00120 Last edited: 20/5/05

 NOTE: This reference database in *eye tools* is used to find more information about the wide range of progressive spectacle lenses.

The database displays the *Engravings* that are used for the identification of the lens designs & materials. The refractive *Index* and *Fitting Cross* height are also included.

The *eye tools* search can be made in three different ways: By a *Word* in the name; by the *Product* or by the *Supplier*. There is also an option to simply list *All*.



1. Click on **C** to clear all data.
2. Decide whether the search will be by *Word*, *Product* or *Supplier*.
 - *Word*: Enter part of the product's name. eg: Comfort.
 - *Product*: Select a name from the drop-down list. (Type a letter to jump to that location in the alphabetical list).
 - *Supplier*: Select a name from the drop-down list.
3. Click on **=** to conduct the search.
4. The results are displayed as the *Company*, *Product*, *Material*, refractive *Index*, *Fitting Cross* height (relative to the engraving marks) and the *Engravings* for identification.

Figure: The calculator for Progressive Lens Identification

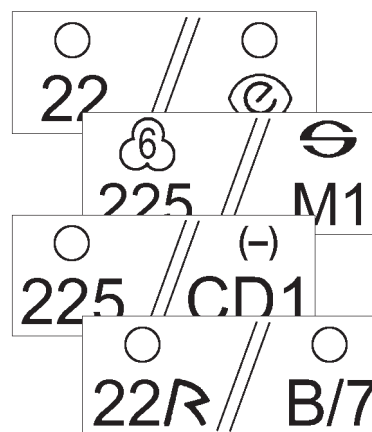


Figure: Engraving information in Eye Tools shows the temporal and nasal information on progressive lenses