

# System Requirements

Document: 00101 Last edited: 20/5/05

The *eye tools* program will operate on most Windows computer systems. However, best results will be achieved when the system is adequately resourced. If there is insufficient free space on the system hard drive, limited memory or an old operating system you may notice sluggish responses.

## Recommended Minimum

- ◆ **Memory:** 32MB of RAM (128MB recommended)
- ◆ **Hard disk space:** 10MB of available hard-disk space.
- ◆ **Processor:** Intel Pentium 90 Mhz or higher.
- ◆ **Operating system:** Windows 98, Windows Millennium, Windows NT 4.0, Widows 2000, or Windows XP.

Windows 2000 or Windows XP is recommended for core system stability.

- ◆ **Screen:**
  - Colour monitor - VGA or higher resolution
  - Recommended resolution set to 1024 x 768 pixels
  - These settings are accessed by...
    - > My computer > Control panel
    - > Display > Settings
    - > Screen area
  - At higher resolutions - the *eye tools* program will operate in a window that is not full screen.
  - At lower resolution (800 x 600) - *eye tools* will operate a different set of windows designed for this format.
  - If the screen area resolution is changed, the *eye tools* program must be re-started for the new settings to have effect.

- ◆ **Printer:** A basic monochrome laser printer is recommended for speed and economy. Examples include the Epson EPL-6100L, HP LaserJet 1000, Canon LBP-1120, Fuji-Xerox P3210, etc.

Ink-jet printers will work with the program, but they are not usually recommended because the ink cartridges are expensive and the speed is slow.

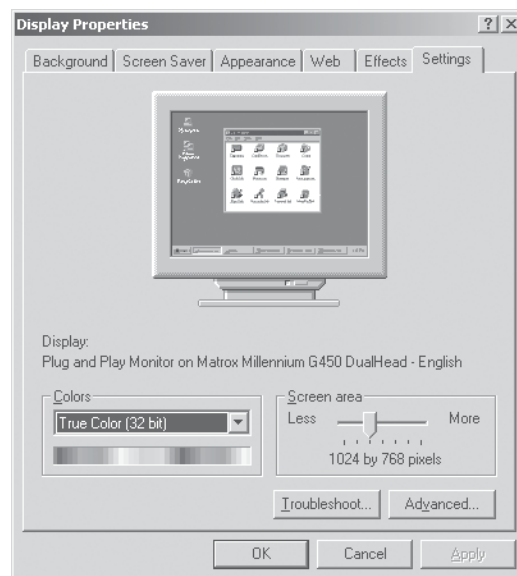


Figure: Setting the screen resolution